



RoHS TEST REPORT LIST

Product : **LED Tube Light**

Model : NST-T8-18WL12, NST-T8-08WL06, NST-T8-09WL06, NST-T8-10WL06,
NST-T8-12WL09, NST-T8-13WL09, NST-T8-14WL09, NST-T8-16WL09,
NST-T8-16WL12, NST-T8-23WL15, NST-T8-24WL15, NST-T5-09WL06,
NST-T5-14WL09, NST-T5-15WL09, NST-T5-16WL12, NST-T5-18WL12,
NST-T5-23WL15, NST-T5-24WL15

Applicant : **NEWSTAR LED CO., LIMITED**

Address : 7/F, Block A, YuShan Industrial Park, Songbai Road, ShiYan Town,
Bao'An, ShenZhen, China, 518108

Manufacturer : **NEWSTAR LED CO., LIMITED**

Address : 7/F, Block A, YuShan Industrial Park, Songbai Road, ShiYan Town,
Bao'An, ShenZhen, China, 518108

Trademark : 

Report No. : CTE14IR-187R

Issue Date : September 02, 2014

Authorized by :
For Coffee-T Electronics Technology Co., Ltd.

Sunny Li
Senior Manager

Test data listed in this report are based on the reports of the separated parts submitted by applicant. Coffee-T is not responsible for the authenticity of all the test data of separated part.



The test report is valid for above tested sample only and shall not be reproduced in part without written approval of the Coffee-T Electronics Technology Co., Ltd.

Material List:

NO.	Parts/ Material List	Remark
1	1W LED chip	/
2	MCPCB	/
3	Aluminum Cup	/
4	Lens	/
5	Lens Fixing Screw	/
6	Lampholder	/
7	Lampholder Fixing Screw	/
8	Driver IC	/
9	Schottky Diode	/
10	SMT power inductors	/
11	SMD Resistor	/
12	Electrolytic Capacitor	/
13	MR16 Pin	/
14	Driver PCB	/
15	Electronic Wire (red)	/
16	Electronic Wire (black)	/
17	Thermal Silicon Grease	/



Test results-1:

No. ITEM	SAMPLE CONCENTRATION (mg/kg)			MDL (mg/kg)	REQUIRED LIMIT (mg/kg)
	1	2	3		
Cd	N.D	N.D	N.D	2	<100
Cr(VI)	N.D	N.D	N.D	2	<1000
Hg	N.D	N.D	N.D	2	<1000
Pb	N.D	N.D	N.D	2	<1000
Polybrominated Biphenyls (PBBs)	N.D	----	----	----	<1000
Monobromobiphenyl	N.D	----	----	5	----
Dibromobiphenyl	N.D	----	----	5	----
Tribromobiphenyl	N.D	----	----	5	----
Terabromobiphenyl	N.D	----	----	5	----
Pentabromobiphenyl	N.D	----	----	5	----
Hexabromobiphenyl	N.D	----	----	5	----
Heptabromobiphenyl	N.D	----	----	5	----
Octabromobiphenyl	N.D	----	----	5	----
Nonabromodiphenyl	N.D	----	----	5	----
Decabromodiphenyl	N.D	----	----	5	----
Polybrominated Diphenylethers (PBDEs)	N.D	----	----	----	<1000
Monobromodiphenyl ether	N.D	----	----	5	----
Dibromodiphenyl ether	N.D	----	----	5	----
Tribromodiphenyl ether	N.D	----	----	5	----
Tetrabromodiphenyl ether	N.D	----	----	5	----
Pentabromodiphenyl ether	N.D	----	----	5	----
Hexabromodiphenyl ether	N.D	----	----	5	----
Heptabromodiphenyl ether	N.D	----	----	5	----
Octabromodiphenyl ether	N.D	----	----	5	----
Nonabromodiphenyl ether	N.D	----	----	5	----
Decabromodiphenyl ether	N.D	----	----	5	----
Result(P/F)	P	P	P	----	----



Test results-2:

ITEM \ SAMPLE No.	SAMPLE CONCENTRATION (mg/kg)			MDL (mg/kg)	REQUIRED LIMIT (mg/kg)
	4	5	6		
Cd	N.D	N.D	N.D	2	<100
Cr(VI)	N.D	N.D	N.D	2	<1000
Hg	N.D	N.D	N.D	2	<1000
Pb	N.D	N.D	N.D	2	<1000
Polybrominated Biphenyls (PBBs)	----	----	N.D	----	<1000
Monobromobiphenyl	----	----	N.D	5	----
Dibromobiphenyl	----	----	N.D	5	----
Tribromobiphenyl	----	----	N.D	5	----
Terabromobiphenyl	----	----	N.D	5	----
Pentabromobiphenyl	----	----	N.D	5	----
Hexabromobiphenyl	----	----	N.D	5	----
Heptabromobiphenyl	----	----	N.D	5	----
Octabromobiphenyl	----	----	N.D	5	----
Nonabromodiphenyl	----	----	N.D	5	----
Decabromodiphenyl	----	----	N.D	5	----
Polybrominated Diphenylethers (PBDEs)	----	----	N.D	----	<1000
Monobromodiphenyl ether	----	----	N.D	5	----
Dibromodiphenyl ether	----	----	N.D	5	----
Tribromodiphenyl ether	----	----	N.D	5	----
Tetrabromodiphenyl ether	----	----	N.D	5	----
Pentabromodiphenyl ether	----	----	N.D	5	----
Hexabromodiphenyl ether	----	----	N.D	5	----
Heptabromodiphenyl ether	----	----	N.D	5	----
Octabromodiphenyl ether	----	----	N.D	5	----
Nonabromodiphenyl ether	----	----	N.D	5	----
Decabromodiphenyl ether	----	----	N.D	5	----
Result(P/F)	P	P	P	----	



Test results-3:

ITEM \ SAMPLE No.	SAMPLE CONCENTRATION (mg/kg)			MDL (mg/kg)	REQUIRE LIMIT (mg/kg)
	7	8	9		
Cd	N.D	N.D	N.D	2	<100
Cr(VI)	N.D	N.D	Negative	2	<1000
Hg	N.D	N.D	N.D	2	<1000
Pb	N.D	N.D	N.D	2	<1000
Polybrominated Biphenyls (PBBs)	----	N.D	N.D	----	<1000
Monobromobiphenyl	----	N.D	N.D	5	----
Dibromobiphenyl	----	N.D	N.D	5	----
Tribromobiphenyl	----	N.D	N.D	5	----
Tetabromobiphenyl	----	N.D	N.D	5	----
Pentabromobiphenyl	----	N.D	N.D	5	----
Hexabromobiphenyl	----	N.D	N.D	5	----
Heptabromobiphenyl	----	N.D	N.D	5	----
Octabromobiphenyl	----	N.D	N.D	5	----
Nonabromodiphenyl	----	N.D	N.D	5	----
Decabromodiphenyl	----	N.D	N.D	5	----
Polybrominated Diphenylethers (PBDEs)	----	N.D	N.D	----	<1000
Monobromodiphenyl ether	----	N.D	N.D	5	----
Dibromodiphenyl ether	----	N.D	N.D	5	----
Tribromodiphenyl ether	----	N.D	N.D	5	----
Tetabromodiphenyl ether	----	N.D	N.D	5	----
Pentabromodiphenyl ether	----	N.D	N.D	5	----
Hexabromodiphenyl ether	----	N.D	N.D	5	----
Heptabromodiphenyl ether	----	N.D	N.D	5	----
Octabromodiphenyl ether	----	N.D	N.D	5	----
Nonabromodiphenyl ether	----	N.D	N.D	5	----
Decabromodiphenyl ether	----	N.D	N.D	5	----
Result(P/F)	P	P	P	----	



Test results-4:

ITEM \ SAMPLE No.	SAMPLE CONCENTRATION (mg/kg)			MDL (mg/kg)	REQUIRED LIMIT (mg/kg)
	10	11	12		
Cd	N.D	N.D	N.D	2	<100
Cr(VI)	N.D	N.D	Negative	2	<1000
Hg	N.D	N.D	N.D	2	<1000
Pb	N.D	457	13	2	<1000
Polybrominated Biphenyls (PBBs)	N.D	N.D	N.D	-----	<1000
Monobromobiphenyl	N.D	N.D	N.D	5	-----
Dibromobiphenyl	N.D	N.D	N.D	5	-----
Tribromobiphenyl	N.D	N.D	N.D	5	-----
Terabromobiphenyl	N.D	N.D	N.D	5	-----
Pentabromobiphenyl	N.D	N.D	N.D	5	-----
Hexabromobiphenyl	N.D	N.D	N.D	5	-----
Heptabromobiphenyl	N.D	N.D	N.D	5	-----
Octabromobiphenyl	N.D	N.D	N.D	5	-----
Nonabromodiphenyl	N.D	N.D	N.D	5	-----
Decabromodiphenyl	N.D	N.D	N.D	5	-----
Polybrominated Diphenylethers (PBDEs)	N.D	N.D	N.D	-----	<1000
Monobromodiphenyl ether	N.D	N.D	N.D	5	-----
Dibromodiphenyl ether	N.D	N.D	N.D	5	-----
Tribromodiphenyl ether	N.D	N.D	N.D	5	-----
Tetrabromodiphenyl ether	N.D	N.D	N.D	5	-----
Pentabromodiphenyl ether	N.D	N.D	N.D	5	-----
Hexabromodiphenyl ether	N.D	N.D	N.D	5	-----
Heptabromodiphenyl ether	N.D	N.D	N.D	5	-----
Octabromodiphenyl ether	N.D	N.D	N.D	5	-----
Nonabromodiphenyl ether	N.D	N.D	N.D	5	-----
Decabromodiphenyl ether	N.D	N.D	N.D	5	-----
Result(P/F)	P	P	P	-----	



Test results-5:

ITEM \ SAMPLE No.	SAMPLE CONCENTRATION (mg/kg)			MDL (mg/kg)	REQUIRED LIMIT (mg/kg)
	13	14	15		
Cd	N.D	N.D	N.D	2	<100
Cr(VI)	N.D	N.D	N.D	2	<1000
Hg	N.D	N.D	N.D	2	<1000
Pb	N.D	N.D	N.D	2	<1000
Polybrominated Biphenyls (PBBs)	----	N.D	N.D	----	<1000
Monobromobiphenyl	----	N.D	N.D	5	----
Dibromobiphenyl	----	N.D	N.D	5	----
Tribromobiphenyl	----	N.D	N.D	5	----
Terabromobiphenyl	----	N.D	N.D	5	----
Pentabromobiphenyl	----	N.D	N.D	5	----
Hexabromobiphenyl	----	N.D	N.D	5	----
Heptabromobiphenyl	----	N.D	N.D	5	----
Octabromobiphenyl	----	N.D	N.D	5	----
Nonabromodiphenyl	----	N.D	N.D	5	----
Decabromodiphenyl	----	N.D	N.D	5	----
Polybrominated Diphenylethers (PBDEs)	----	N.D	N.D	----	<1000
Monobromodiphenyl ether	----	N.D	N.D	5	----
Dibromodiphenyl ether	----	N.D	N.D	5	----
Tribromodiphenyl ether	----	N.D	N.D	5	----
Tetrabromodiphenyl ether	----	N.D	N.D	5	----
Pentabromodiphenyl ether	----	N.D	N.D	5	----
Hexabromodiphenyl ether	----	N.D	N.D	5	----
Heptabromodiphenyl ether	----	N.D	N.D	5	----
Octabromodiphenyl ether	----	N.D	N.D	5	----
Nonabromodiphenyl ether	----	N.D	N.D	5	----
Decabromodiphenyl ether	----	N.D	N.D	5	----
Result(P/F)	P	P	P	----	



Test results-6:

ITEM \ SAMPLE No.	SAMPLE CONCENTRATION (mg/kg)			MDL (mg/kg)	REQUIRED LIMIT (mg/kg)
	16	17			
Cd	N.D	N.D	----	2	<100
Cr(VI)	N.D	N.D	----	2	<1000
Hg	N.D	N.D	----	2	<1000
Pb	N.D	N.D	----	2	<1000
Polybrominated Biphenyls (PBBs)	N.D	N.D	----	----	<1000
Monobromobiphenyl	N.D	N.D	----	5	----
Dibromobiphenyl	N.D	N.D	----	5	----
Tribromobiphenyl	N.D	N.D	----	5	----
Terabromobiphenyl	N.D	N.D	----	5	----
Pentabromobiphenyl	N.D	N.D	----	5	----
Hexabromobiphenyl	N.D	N.D	----	5	----
Heptabromobiphenyl	N.D	N.D	----	5	----
Octabromobiphenyl	N.D	N.D	----	5	----
Nonabromodiphenyl	N.D	N.D	----	5	----
Decabromodiphenyl	N.D	N.D	----	5	----
Polybrominated Diphenylethers (PBDEs)	N.D	N.D	----	----	<1000
Monobromodiphenyl ether	N.D	N.D	----	5	----
Dibromodiphenyl ether	N.D	N.D	----	5	----
Tribromodiphenyl ether	N.D	N.D	----	5	----
Tetrabromodiphenyl ether	N.D	N.D	----	5	----
Pentabromodiphenyl ether	N.D	N.D	----	5	----
Hexabromodiphenyl ether	N.D	N.D	----	5	----
Heptabromodiphenyl ether	N.D	N.D	----	5	----
Octabromodiphenyl ether	N.D	N.D	----	5	----
Nonabromodiphenyl ether	N.D	N.D	----	5	----
Decabromodiphenyl ether	N.D	N.D	----	5	----
Result(P/F)	P	P	----	----	



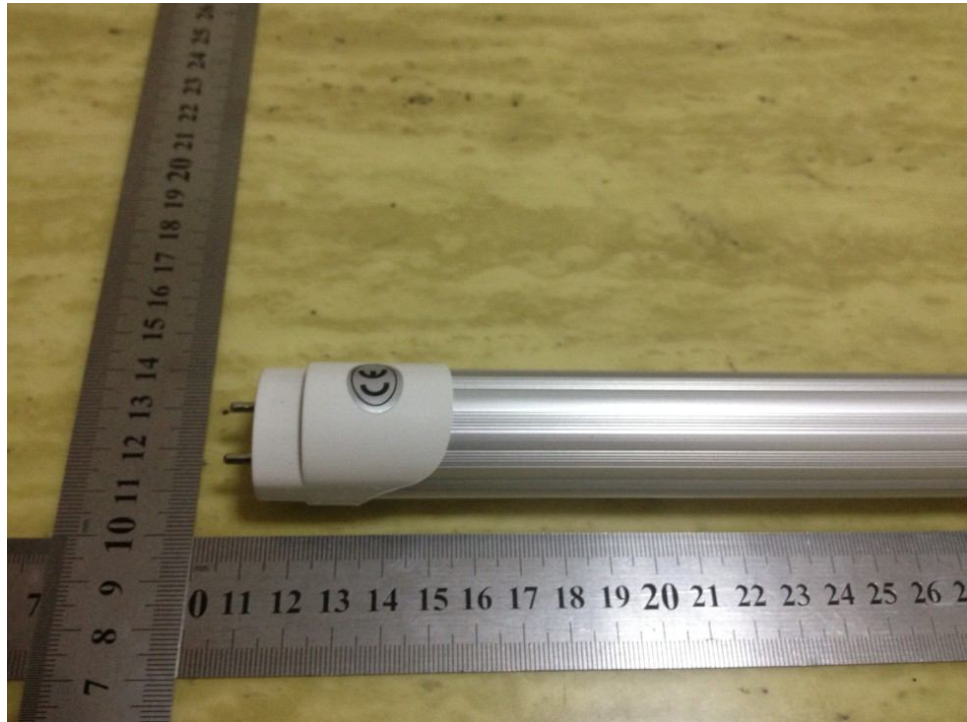
Note:

1. mg/kg = ppm
2. P=Pass
3. F=Fail
4. MDL=Method Detection Limit
5. N.D.=Not Detected
6. ◇ = Spot- Test:
 - Negative = Absence of CrVI coating
 - Positive = Presence of CrVI coating
 - (The tested sample should be further verified by boiling-water-extraction method if the spot test result is negative or cannot be confirmed)
- Boiling-water-extraction:
 - Negative = Absence of CrVI coating
 - Positive = Presence of CrVI coating; The detected concentration in boiling-water-extraction solution is equal or greater than 0.02mg/kg with 50cm² sample surface area.
7. # = Positive indicates the presence of CrVI on the tested areas.
 - Negative indicates the absence of CrVI on the tested areas.
8. “---“ = Not regulated



Appendix for

EUT - View



EUT -View

